



modular partitions  
**SLALOM**



## FLEXIBILITY, VERSATILITY, SIMPLICITY

The **Slalom** Modular Partition System consists of multiple panels spanning between aluminum uprights for dividing and defining space.

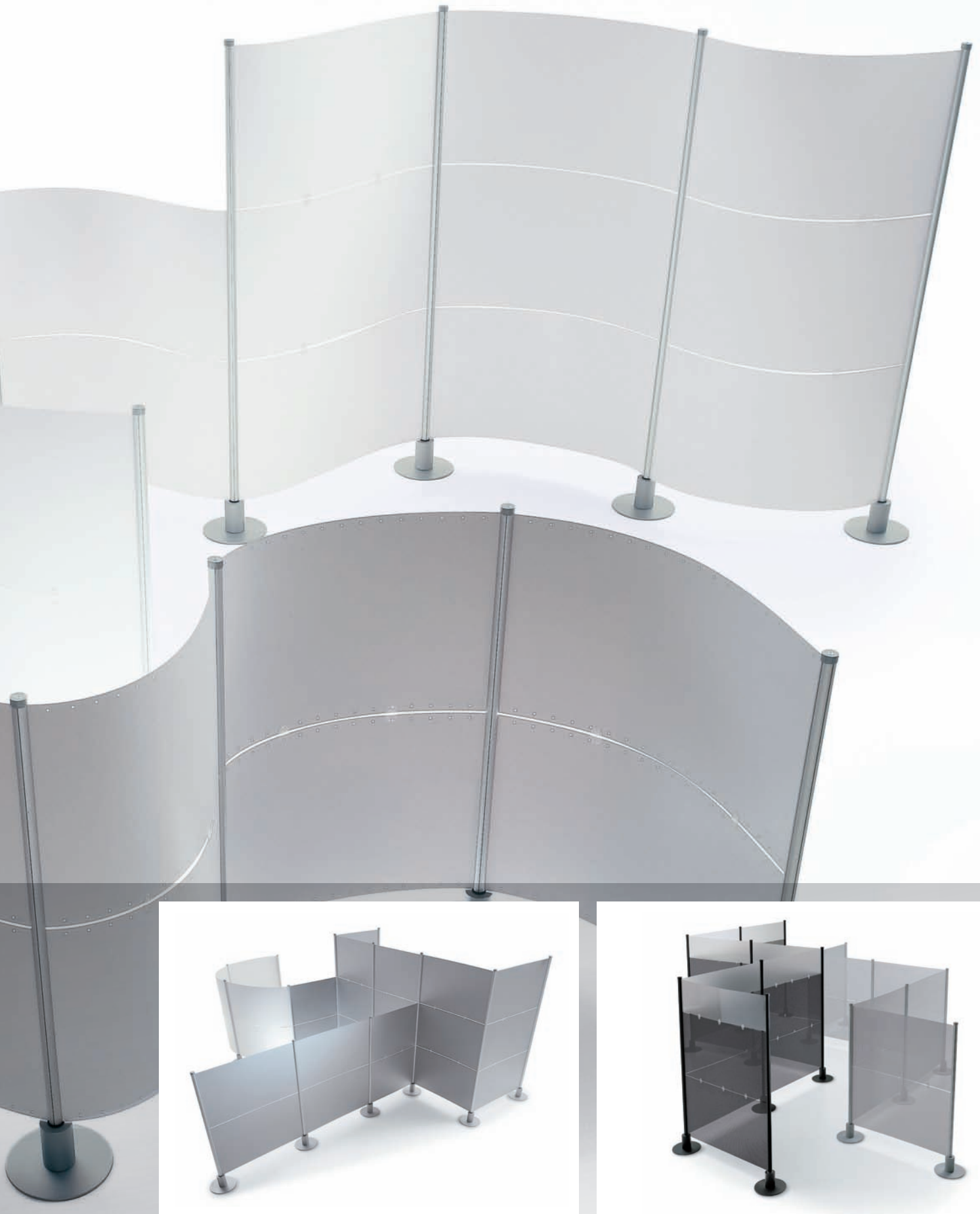
**Slalom** provides visual separations for privacy and security areas as well as crowd control flow patterns.

**Slalom** can be configured into a series of curves, straight runs and corner partitions with up to (4) intersecting panels per upright. **Slalom** provides a stable yet easily re-configurable partition system while offering endless possibilities to define space in any interior environment.

Design: Menguzzato & Nascimben



Slalom can be configured with a combination of panel finishes. Shown with striped translucent and transparent smoke grey.\*



Slalom is quick and easy to install with standard models available in 49" and 72" heights and widths from 42" to 164".

Additional 'add-on' panels are used to increase lengths and combine different panel heights into various configurations. Shown with translucent and transparent smoke grey panels.\*

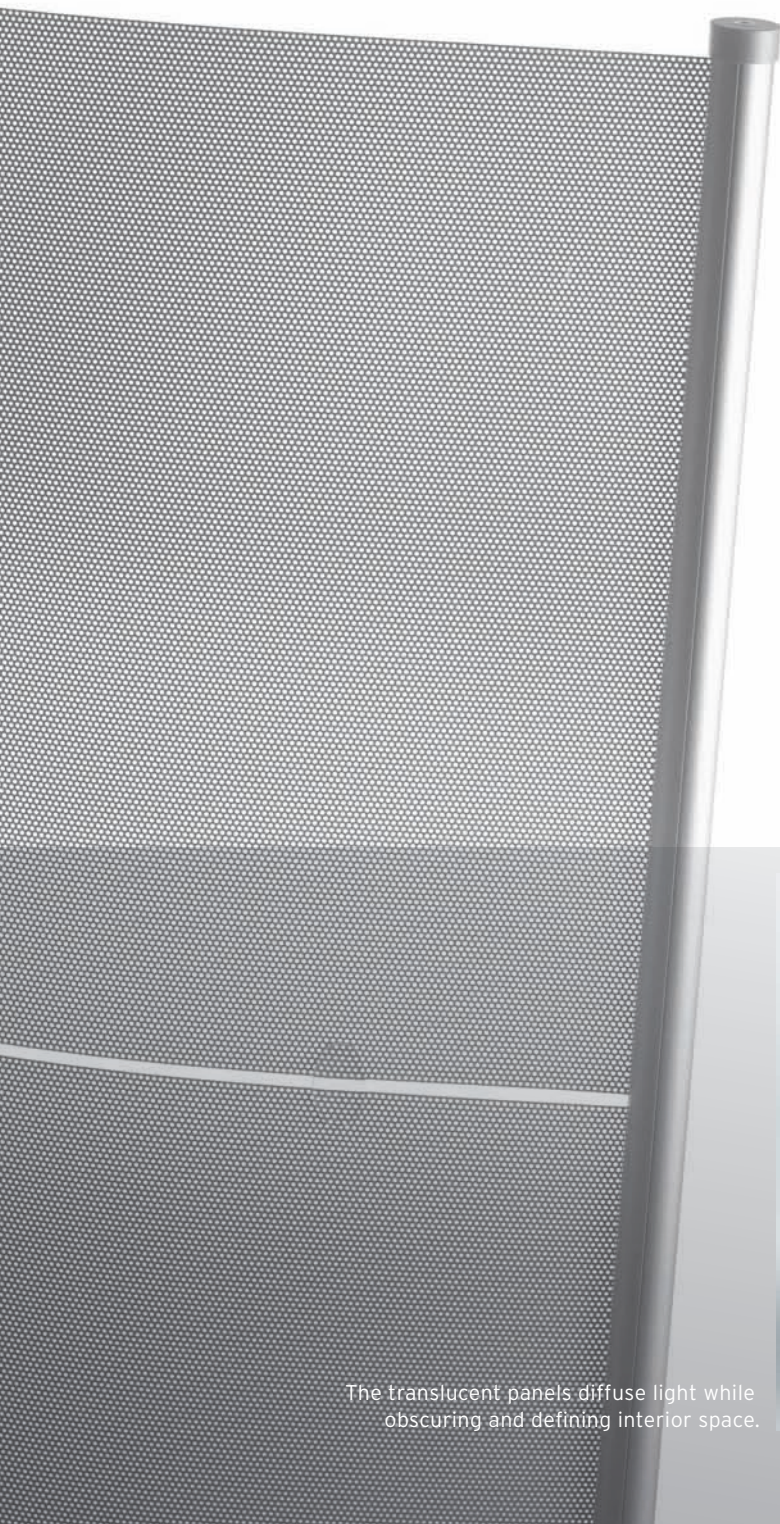


Commercial space, shown with striped translucent panels.

## DEFINE SPACE

**Slalom** panels are infinitely adjustable, flexible and fireproof. The panel curvature is determined by moving the uprights closer or farther apart.

The micro-perforated steel panels are semi-flexible also allowing adjustable curves and arcs, with a minimum radius of 24".



The translucent panels diffuse light while obscuring and defining interior space.

# SLALOM CONCEPTS



\*\* Shown with wood veneer panels.



Commercial spaces  
Healthcare  
Educational

Restaurants  
Hospitality  
Retail environments





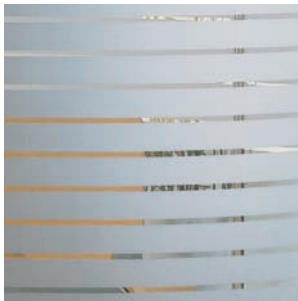
## FINISHES



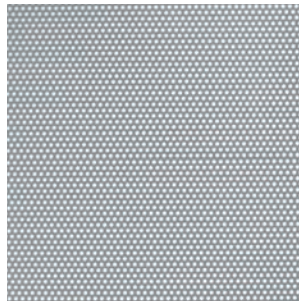
Translucent PVC



Cinder PVC



Horizontal Stripe PVC



Micro-perforated Steel,  
Aluminum Metallic

### PVC

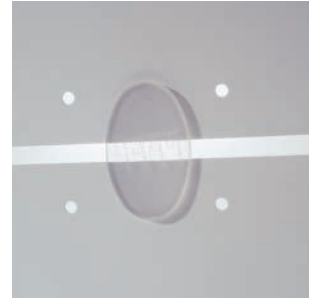
All PVC panels are fireproof.

- \* Special Order, transparent smoke grey panels.
- \*\* Special Order, wood veneer panels.

## DETAILS



Slalom uprights are finished in natural anodized aluminum with 10" dia. painted steel base.



Translucent elements connect panels together.



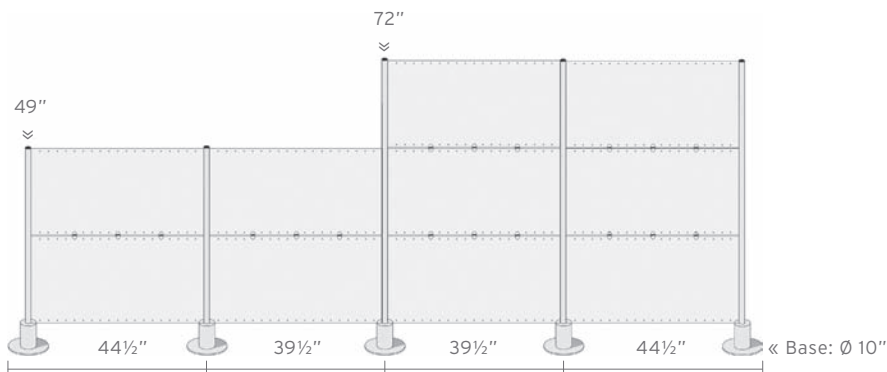
Optional base plate fits flush to wall.



Base with optional casters (non-locking) provide additional mobility.



## DIMENSIONS



Uprights will accept up to (4) intersecting panels.



PETER PEPPER PRODUCTS  
EXPRESSIVE ESSENTIALS®

PETER PEPPER PRODUCTS, INC.  
17929 S. Susana Road  
PO Box 5769  
Compton, CA 90224-5769

T: 800 496 0204  
T: 310 639 0390  
F: 310 639 6013  
W: [www.peterpepper.com](http://www.peterpepper.com)  
E: [info@peterpepper.com](mailto:info@peterpepper.com)

modular partitions  
**5 SLALOM**



**Mixed Sources**  
Product group from well-managed  
forests and recycled wood or fibre  
[www.fsc.org](http://www.fsc.org) Cert no. SCS-COC-001334  
© 1996 Forest Stewardship Council

